

## CURRENT STATISTICS

## BANKING RETURNS (Rs Crores)

Reserve Bank	Latest Week†	Week Ago	Month Ago	Year Ago
1. Note Circulation	1834.52	1835.98	1867.88	1721.40
2. Rupee Coin	127.90	127.47	124.58	129.63
3. Deposits				
(a) Central Govt	54.67	62.41	66.70	59.04
(b) Other Govts	20.79	18.36	16.79	13.80
(c) Banks	115.45	114.67	97.68	65.98
(d) Others	113.06	90.92	98.08	162.47
4. Foreign Securities	143.01	143.01	158.01	178.01
5. Balances Abroad	13.59	14.47	10.51	12.29
6. Rupee Securities	1476.40	1486.40	1491.40	1315.73
7. Investments	257.10	230.59	240.59	294.21
8. Loans and Advances to Govts	31.92	43.62	44.42	26.74
9. Other Loans and Advances	130.06	121.56	120.23	74.88
<b>Scheduled Banks</b>				
1. Liabilities:				
2. Demand (net)	771.90	781.79	769.43	738.23
3. Time (net)	1192.26	1176.00	1174.45	998.73
4. Total	1964.16	1957.79	1943.88	1736.96
5. Cash in hand	46.57	46.97	47.66	48.08
6. Balances with Reserve Bank	107.34	104.24	95.17	90.52
7. (5) + (6) as % of (4)	7.84	7.72	7.35	7.98
8. Borrowings from Reserve Bank of which				
Usance Bills	13.54	13.61	12.40	1.45
9. Advances of which				
State Bank's	203.99	205.77	200.25	175.95
10. Bills Discounted:				
(a) Inland	105.69	109.81	117.69	92.22
(b) Foreign	43.87	44.03	45.04	35.13
(c) Total	149.56	153.84	162.73	137.35
of which				
State Bank's	12.75	12.94	13.87	12.74
11. Bank Credit (9+10c) as % of (4)	57.32	57.91	57.88	56.72
12. Invest in Govt Sec of which				
State Bank's	379.07	379.12	384.22	301.72
13. (12) as % of (4)	37.66	37.82	38.36	36.63
Cheque Clearance	191.98	197.44	191.98	156.09

†For Reserve Bank Week ended 1-7-1960. For Scheduled Banks and Cheque Clearance week ended 24-6-1960.

## Bombay Money Rates (% per annum)

(Selected Scheduled Banks other than State Bank)

	24.6-1960	Week Ago	Month Ago	Year Ago
Call Money				
From Banks	3.50	3.50	3.52	1.00
Deposits				
Seven Days	2.45	3.37	3.35	3.50
Three Months	3.50	3.50	3.50	3.50
Six Months	3.50	3.49	3.49	2.75

## Bombay Bullion (Rs and nP)

	7-7-1960	Week Ago	Month Ago	Year Ago
Gold (per fine tola)				
Spot	129.00	128.03	126.03	119.37
Forward	128.69	127.90	126.15	118.37
Silver (per 100 tolas)				
Spot	217.44	216.44	212.15	196.12
Forward	217.60	217.12	212.90	195.03

## INDEX NUMBER OF WHOLESALE PRICES

(Base : 1952-53 = 100)

Week Ended	18-6-60	11-6-60	21-5-60	20-6-59
<b>Food Articles</b>	121.4	120.6	119.6	119.4
Cereals	107.3	106.9	105.7	102.1
Pulses	89.3	88.9	89.9	95.5
Fruits & Vegetables	121.3	121.8	133.6	134.2
Milk & Ghee	125.0	125.0	114.0	119.1
Edible oils	140.6	138.6	139.1	132.6
Fish, Eggs & Meat	121.5	118.4	120.3	111.2
Sugar & Gur	138.0	137.7	138.4	147.1
Others	162.4	159.2	164.5	163.8
<b>Liquor &amp; Tobacco</b>	108.5	100.2	106.9	97.9
Tobacco	106.9	107.6	105.3	96.3
<b>Fuel, Power, Light &amp; Lubricants :</b>	118.6	118.5	118.5	115.6
<b>Industrial Raw Materials</b>	139.0	138.5	139.2	120.6
Fibres	140.0	141.8	144.9	110.2
Oilseeds	145.3	142.0	140.0	135.7
Minerals	98.2	98.2	98.2	98.3
Others	128.2	128.4	129.6	113.3
<b>Manufactures</b>	120.3	119.6	119.8	109.3
<b>Intermediate Products</b>	127.0	126.5	125.6	108.2
<b>Finished Products</b>	119.2	118.5	118.8	109.5
Textiles	120.8	119.5	120.0	104.7
Cotton	126.3	125.4	125.1	113.3
Jute	116.4	113.4	116.4	88.5
Woolen	106.2	106.2	104.2	104.2
Silk & Rayon	102.7	102.7	103.0	93.3
Metal Products	148.3	148.3	148.3	143.3
Chemicals	104.4	104.7	104.5	107.2
Oil cakes	131.4	131.0	133.2	143.6
Machinery & transport equipment	110.8	110.8	110.6	106.0
Others	114.7	114.7	114.5	113.2
<b>All Commodities</b>	123.5	122.8	122.4	116.1

## ELECTRICITY GENERATION

(Monthly Averages or Calendar Months)  
(million kWh)

	Output	Industry	Sold (incl others)
1957	906	488.7	732.4
1958	1,031	550.5	830.3
1959	1,215	664.2	974.9
1960	1,275	718.7	1,039.0
1958 Jan	974	530.4	788.2
Feb	920	500.4	752.2
Mar	969	528.6	791.8
April	1,004	542.0	810.5
May	1,046	560.3	840.3
June	1,014	529.4	810.7
July	1,057	559.6	846.0
Aug	1,041	552.1	831.9
Sept	1,051	556.6	843.1
Oct	1,073	574.9	869.8
Nov	1,050	567.9	869.5
Dec	1,113	604.0	909.4
1959 Jan	1,156	626.8	930.2
Feb	1,112	596.4	888.6
Mar	1,171	616.8	918.3
April	1,162	630.5	941.9
May	1,242	668.0	999.4
June	1,202	661.5	969.3
July	1,250	679.9	999.2
Aug	1,244	679.9	994.9
Sept	1,237	686.1	996.2
Oct	1,267	705.7	1,025.0
Nov	1,235	685.4	994.0
Dec	1,301	733.7	1,046.9
1960 Jan	1,297	733.4	1,055.5
Feb	1,252	704.0	1,022.5

Source : Ministry of Irrigation and Power.

**INDUSTRIAL DISPUTES IN INDIA**

(Numbers)

Year/Month	Disputes	Workers involved	Working days lost
1955	1,1655	527,767	5,697,848
1956	1,203	715,130	6,992,040
1957	1,522	666,253	5,903,083
1958	1,784	908,722	6,406,566
1958 : Jan	145	58,402	354,185
Feb	133	87,130	342,205
Mar	167	91,489	818,824
Apr	170	65,199	530,162
May	160	61,570	560,459
June	163	164,673	1,529,248
July	164	112,060	464,165
Aug	147	72,579	655,057
Sept	132	59,359	415,083
Oct	121	36,501	262,600
Nov	136	35,548	177,574
Dec	139	48,526	199,012
1959 : Jan	152	61,169	306,998
Feb	93	35,141	271,253
Mar	134	56,019	279,346
Apr	158	44,834	383,741
May	131	59,764	354,517
June	161	80,223	826,805
July	142	62,407	745,436
Aug	141	66,437	396,789
Sept	137	66,146	220,586
Oct	168	72,806	273,181
Nov	139	53,432	254,426
Dec	128	85,483	402,393
1960 : Jan	141	79,600	423,077

**INDUSTRIAL DISPUTES IN BOMBAY STATE**

(Numbers)

Year/Month	Disputes	Workers involved	Working days lost
1955	255	103,319	361,249
1956	294	245,140	705,881
1957	306	192,283	867,311
1958	245	216,105	1,261,770
1959	291	195,089	648,074
1958 : Jan	31	14,946	69,955
Feb	25	11,475	27,114
Mar	19	5,426	11,428
Apr	34	16,858	113,292
May	25	10,340	147,368
June	26	65,701	605,755
July	30	77,219	197,087
Aug	21	5,824	10,709
Sept	21	5,802	11,209
Oct	17	1,949	20,561
Nov	23	3,811	13,444
Dec	24	17,602	33,848
1959 : Jan	21	14,449	27,814
Feb	20	5,231	15,371
Mar	17	4,583	6,276
April	33	9,187	47,545
May	44	31,335	105,951
June	37	22,089	80,508
July	31	14,839	81,871
Aug	34	21,162	78,187
Sept	21	2,969	20,758
Oct	28	24,576	29,087
Nov	35	22,938	34,840
Dec	38	42,863	199,866
1960 : Jan	50	35,643	79,418
Feb	36	17,730	75,803
Mar	37	16,497	71,701

Source : Government of Bombay.

**WORKING CLASS COST OF LIVING INDEX**

(Monthly Average or Calendar Months)

(Base : 1949 = 100)

											All India	
	Bombay		Calcutta		Delhi		Kanpur		Madras		(average)	
	F	G	F	G	F	G	F	G	F	G	F	G
1955	110	110	90	92	97	99	68	78	96	99	92	96
1956	117	115	98	98	112	109	81	89	110	111	105	105
1957	123	120	106	105	117	114	87	94	113	116	112	111
1958	133	129	111	110	117	113	98	98	124	124	118	116
1959	140	134	111	110	125	120	94	98	134	133	125	121
1960	141	136	111	111	123	122	90	97	139	138	124*	122*
1958 : Mar	127	124	104	105	110	108	82	89	116	119	110	110
June	133	129	109	107	114	111	94	98	118	121	118	116
Sept	136	132	119	116	124	117	104	104	128	127	125	121
Dec	133	130	110	110	124	118	100	101	137	133	122	119
1959 : Jan	132	129	104	105	129	122	102	103	132	130	119	117
Feb	133	130	102	104	136	126	102	103	127	127	120	118
Mar	134	131	102	104	137	126	96	99	125	127	118	117
Apr	134	130	103	104	124	119	91	95	128	128	119	117
May	137	132	104	106	120	116	91	95	132	131	121	119
June	140	135	110	110	121	117	93	97	135	134	126	122
July	142	136	118	114	122	117	93	97	137	134	128	124
Aug	143	137	120	116	122	118	94	98	136	134	129	125
Sept	145	137	117	111	122	118	93	97	135	134	128	124
Oct	147	139	120	116	124	120	94	98	139	137	131	126
Nov	145	138	117	114	123	120	95	99	144	139	130	126
Dec	143	137	112	111	121	119	89	96	140	137	126	122
1960 : Jan	143	137	109	110	122	121	88	96	138	137	124*	122*
Feb	141	136	112	111	124	122	91	98	140	139	124*	122*
Mar	140	135	112	112	118	119	90	98	139	138	124*	122*
Apr	—	137	—	112	—	117	—	97	—	138	—	122*

Note: F—Food

G—General

\*Provisional.

Source : Central Statistical Organisation, Delhi

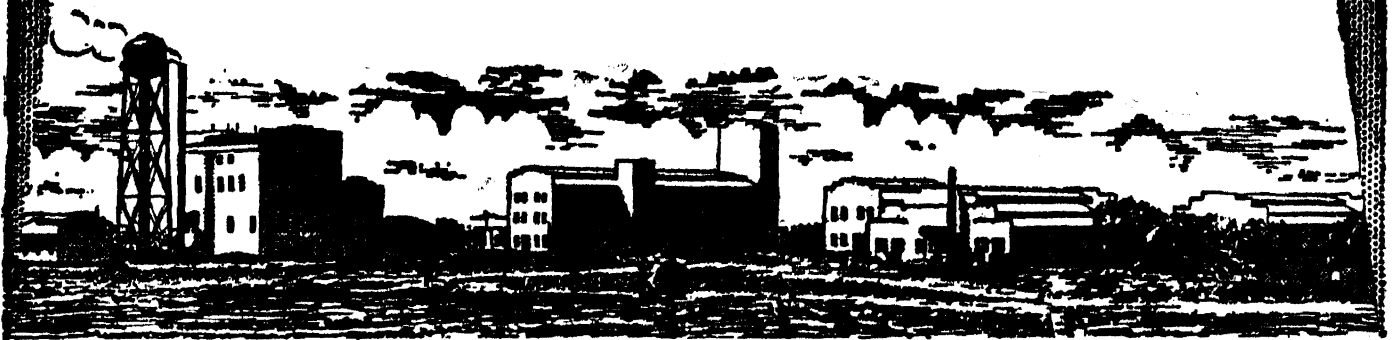
# ATUL

## DYES

*contribute to colour and colour  
enters into almost every article  
that we use*



## DYES CHEMICALS • PHARMACEUTICALS



THE ATUL PRODUCTS LTD. ATUL, VIA BULSAR, WESTERN PLY.